

[illegible]

## SCOPE OF WORK

REMOVE EXISTING WEARING SURFACE. CHIP EXISTING JOINTS & INSTALL ARMORED JOINTS AS SHOWN. REPLACE 2" MIN. BONDED CONC. WEARING SURFACE. PLACE SEALS IN JOINTS.

## ESTIMATED QUANTITIES

6" REG'D - PREFORMED JOINT SEALS J-162 x 38" 60

CONCRETE

360" x 30" x .33" = 132 C.Y.

27

ING SURFACE.  
S EXPOSED, CONCRETE  
DER THE STEEL TO A

STEEL

BEFORE ANY PLACEMENT  
CONCRETE. NOTE: SLAB  
EXPOSED TO WEATHER

EST. WT. = 4,890 lbs.

GENERAL NOTES

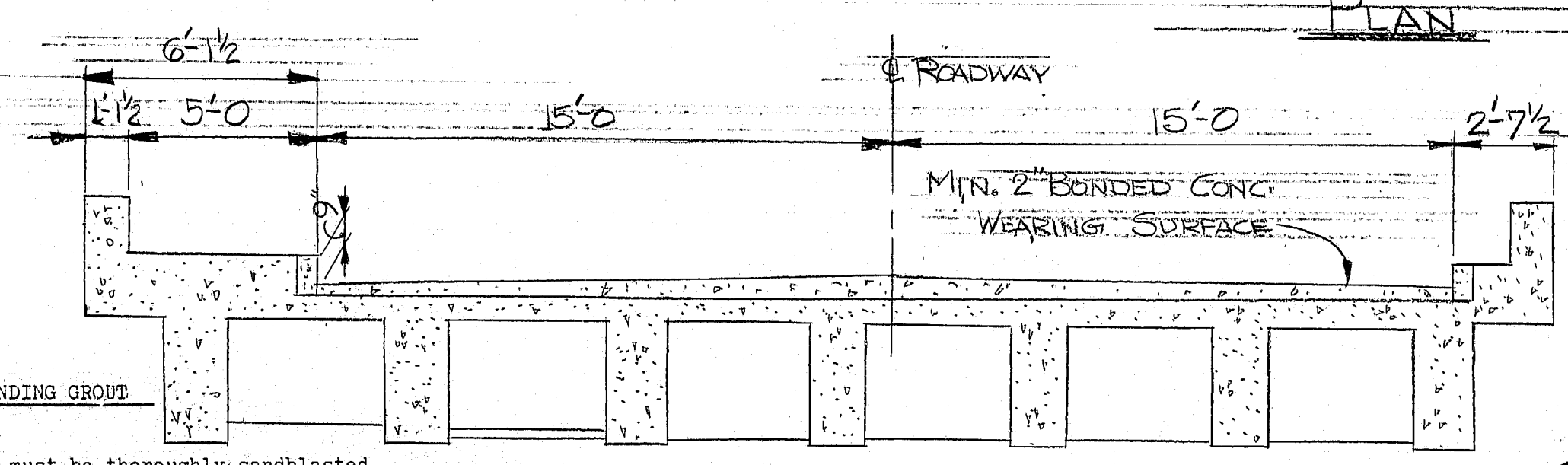
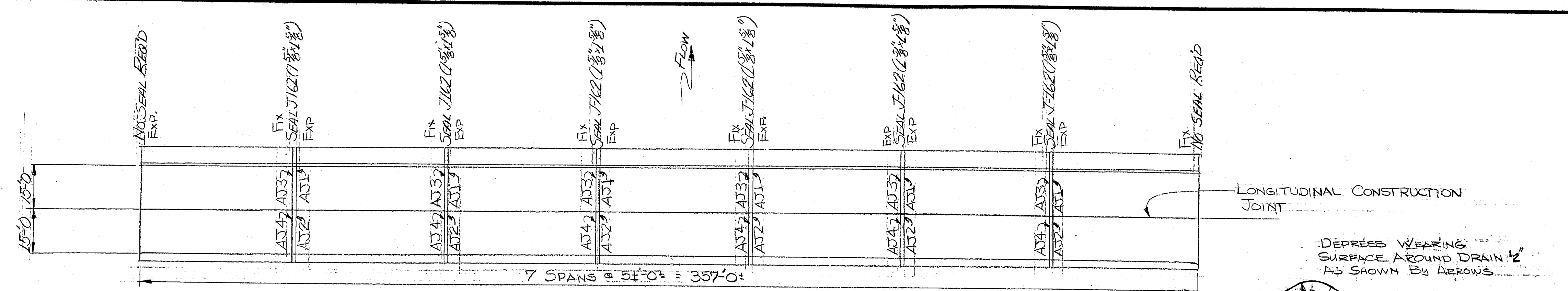
1. REMOVE EXISTING WEARING SURFACE.
2. IF ANY SLAB WEARS ARE EXPOSED, CONCRETE SHOULD BE REMOVED UNDER THE STEEL TO A DEPTH OF 1" MINIMUM.
3. BLAST CLEAN THE SLAB BEFORE ANY PLACEMENT OF BONDING GROUT OR CONCRETE. NOTE: SLAB IS TO BE SURFACE RYD BEFORE PLACEMENT OF BONDING GROUT.
4. BROOM ON A LAYER OF BONDING GROUT JUST PRIOR TO PLACING CONCRETE. SEE NOTE THIS SHEET FOR BONDING GROUT SPECIFICATIONS.
5. CONCRETE TO BE CURED USING BURLAP AND WATER OR OTHER APPROVED METHODS.
6. CONCRETE TO BE LAYED CLASS "M" AND AGGREGATE TO BE CRUSHED LEASE.

STATE OF MAINE  
DEPARTMENT OF TRANSPORTATION

#2522  
MATTAWAMKEAG BR.  
OVER  
MATTAWAMKEAG R.  
IN THE TOWN OF  
MATTAWAMKEAG

IN  
PENOBSCOT COUNTY  
CONC. W.S., ARMORED JOINTS & SEALS  
SHEET 1 OF 1 AUGUSTA, MAINE 12-17-81

178-112



## TRANSVERSE SECTION

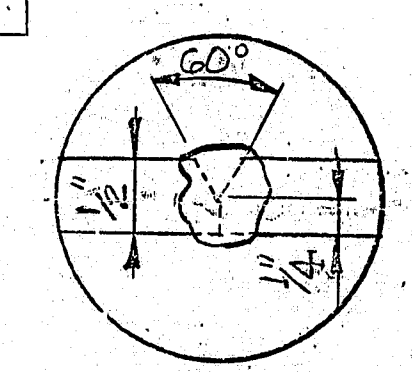
The deck surface must be thoroughly sandblasted and cleaned to remove all dust or loose materials immediately before the bonding grout is placed.

Deck surface to be surface dry with no standing water in pockets or low areas when bonding grout is applied.

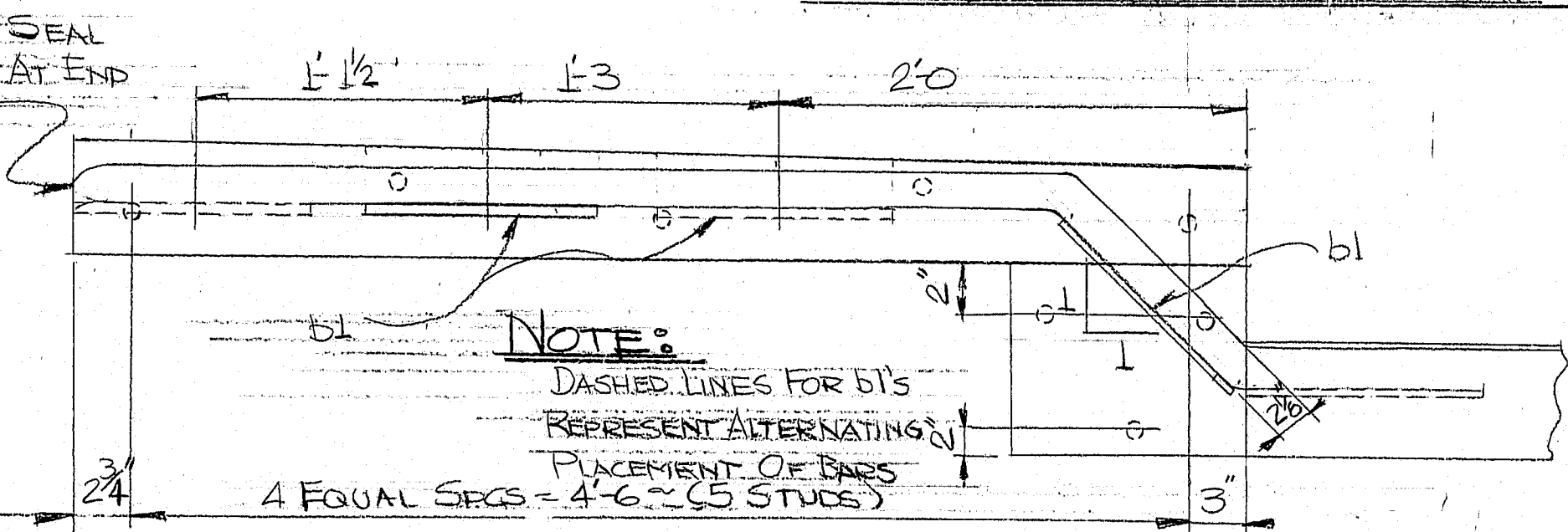
The bonding grout shall consist of equal parts by weight of Portland Cement and concrete sand with the plus No. 8 material removed and mixed with enough water to give a thick creamy consistency.

Bonding grout to be evenly broomed onto the concrete surface ensuring that the entire surface is coated and that no excess grout collects in low spots or pockets. Grout shall be thoroughly broomed under and around reinforcing bars.

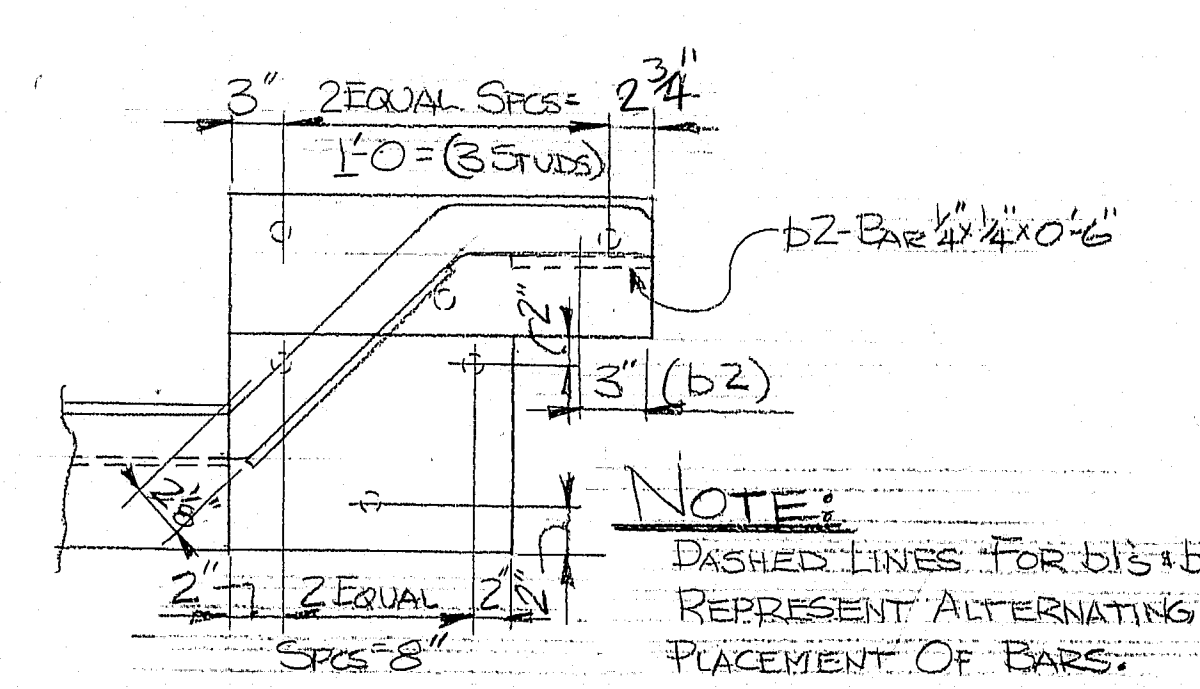
Rate of application must be controlled so that the grout does not dry before the new concrete is placed.



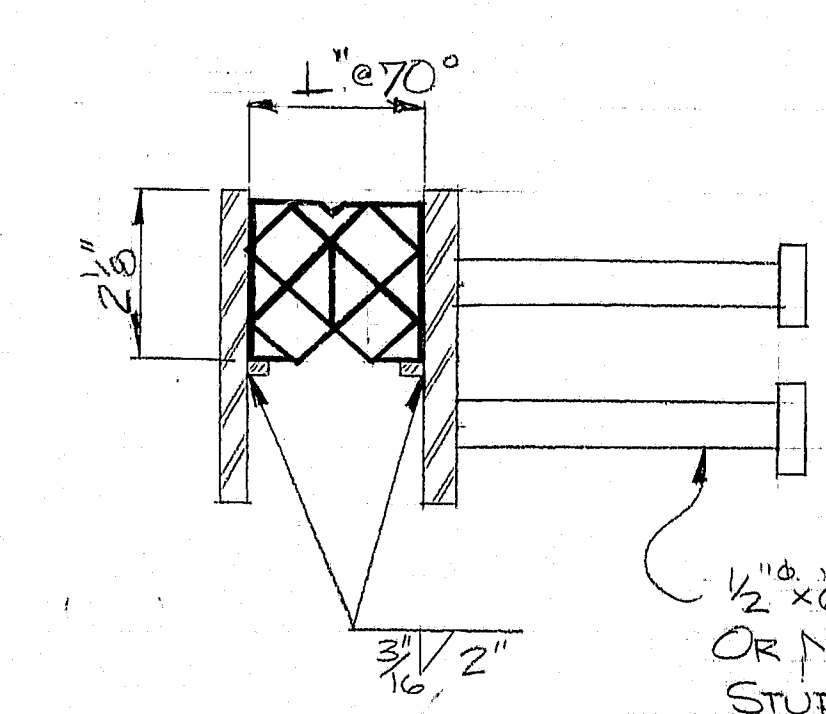
WELD DETAIL  
FIELD WELD



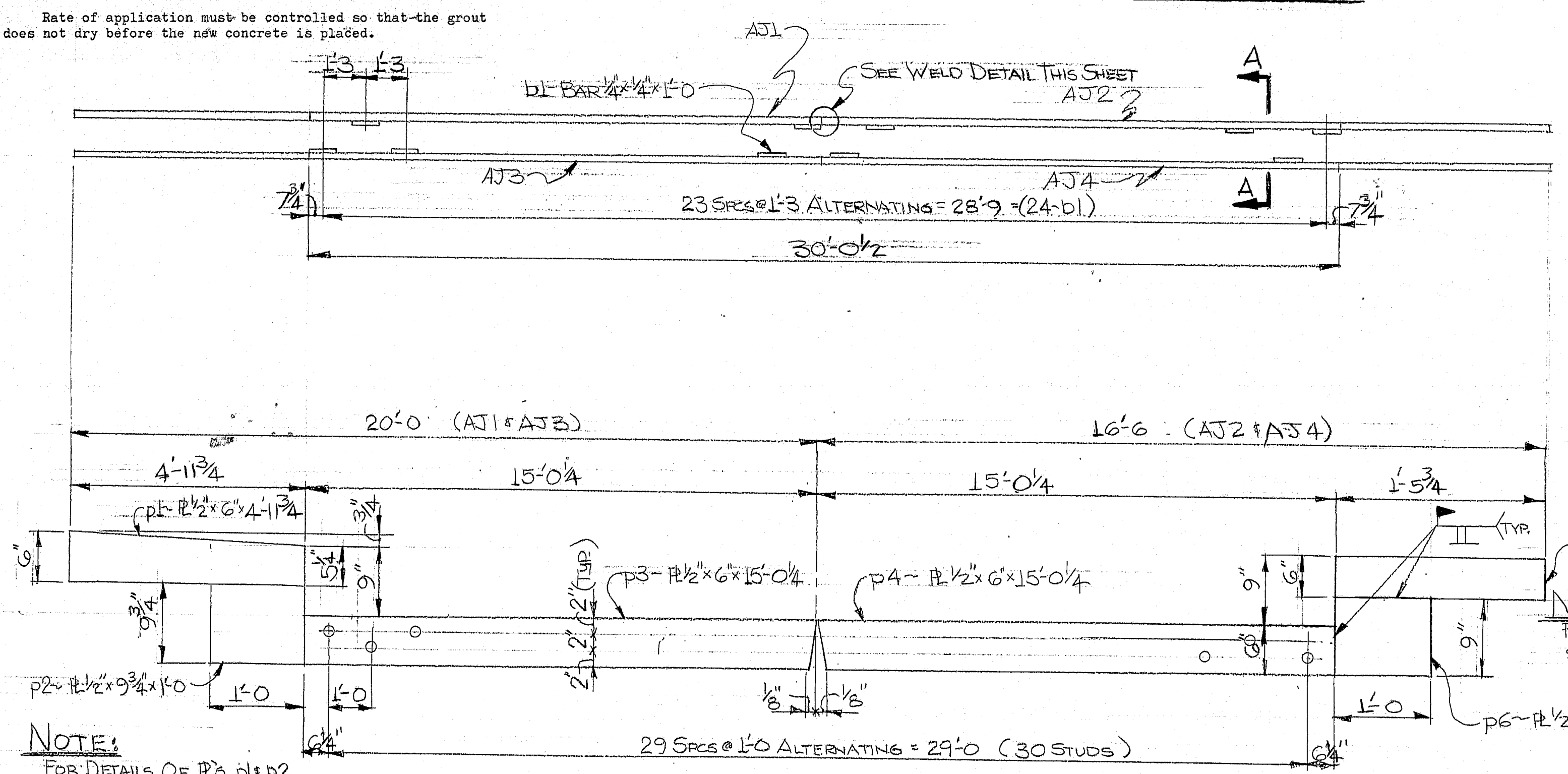
DETAIL "A"



DETAIL "B"



SECTION A-A



NOTE:  
FOR DETAILS OF R's pl p2  
SEE DETAIL "A"

AJ1-6REQ'D      AJ2-6REQ'D  
AJ3-6REQ'D      AJ4-6REQ'D

NOTE:  
FOR DETAILS OF 12'S p5# p6  
SEE DETAIL "B"

<b>PLANS</b>	DESIGN -	BY <u>KRB</u>	DATE <u>4-17-81</u>
	Detailed		
	CHECKED		
	REVISIONS		
	FIELD CHANGES		

BRUNING 44-132 45710